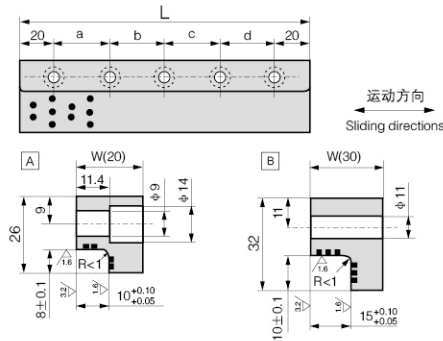


CHB-JSL L型自润滑块
L self-lubrication fast

材质	高力黄铜+石墨
Material	ZCuZn25Al6Fe3Mn3+ Graphite



单位unit:mm

规格 Standard No.	W	L	螺孔位置 Bole Hole				Bolt		Type
			a	b	c	d	螺栓 Size	数量 Number	
JSL-20x 100		100	60	—	—	—		2	A
JSL-20x 150	20	150	55	55	—	—	M8	3	
JSL-20x 200		200	55	50	55	—		4	
JSL-30x 100		100	60	—	—	—		2	B
JSL-30x 150	30	150	55	55	—	—		3	
JSL-30x 200		200	55	50	55	—		4	
JSL-30x 250		250	70	70	70	—		4	C
JSL-45x 200		200	55	50	55	—	M10	4	
JSL-45x 250	45	250	70	70	70	—		4	
JSL-45x 300		300	65	65	65	65		5	C
JSL-45x 350		350	80	75	75	80		5	

Catalog No. — W — L
CHB-JSL — 20 — 100

钢基自润滑导板物理性能

Steel substrate physical properties of self-lubricating guides

润滑剂种类 Lubricant type	给油条件 Oil supply conditions	环境条件 Environmental conditions	最大承载 P (N/mm ²) Max Load Capacity	最高线速度 V (m/min) Max Sliding Speed	最高PV值 (N/mm ² · m/s) Max PV Value Limit	使用温度(°C) Working temperature
固体润滑剂 GR-1	干摩擦 Dry friction	大气中 The atmosphere	100	15	150	-50~+300
	油润滑 Oil lubrication			30	200	-50~+150

密度 (g/cm ³) Density	硬度 (HB) Hardness	延伸率 (%) Elongation	屈服强度(N/mm ²) Yield strength	线膨胀系数 (× 10 ⁻⁶ /°C) Coefficient of linear expansion
8	>210	>12	>755	1.9

CHB-1 无油润滑轴承
Oilless Bushing

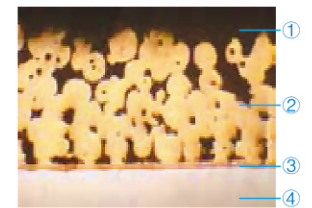
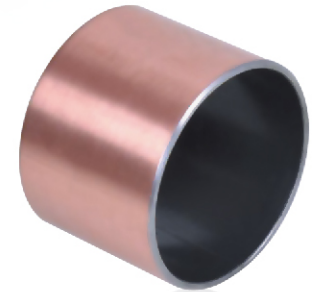
◎ CHB-1 无油润滑轴承/Oilless Bushing

该产品以优质低碳钢为基体，中间烧结球形青铜层，表面轧制改性聚四氟乙烯 (PTFE) 和铅的混合物。它具有较好的自润滑、耐磨损、摩擦系数低、走合性能好、低噪音等性能，产品广泛应用于各种机械的滑动部位，如纺织机、印刷机、液压搬运车、烟草机、健身器、农业机械等。

CHB-1 Carbon Steel self-lubricating bearings used high quality low-carbon steel plate as base, sintered porous bronze as its interlayer and the Compound of PTFE and Lead as its surface. It offers the property of good self-lubrication, low wear, low friction good sliding characteristics, low noise. It has been widely applied to various mechanical sliding positions, such as textile machinery, printing machinery, hydraulic pressure transit vehicle, tobacco machinery, gymnastic instrument and agricultural machinery etc.

技术参数: Technical Data

性能指标 Performance index		数据 Data
最大承载 P Max Load Capacity	静载 Static load	250N/mm ²
	动载 Dynamic load	140N/mm ²
最高线速度 V Max Sliding Speed	干摩擦 Dry friction	2.5m/s
	油润滑 Oil lubrication	5.0m/s
最高PV值 Max PV Value Limit	干摩擦 Dry friction	3.6N/mm ² · m/s
	油润滑 Oil lubrication	50N/mm ² · m/s
摩擦系数 μ Friction coefficient	干摩擦 Dry friction	0.04 ~ 0.20
	油润滑 Oil lubrication	0.02 ~ 0.07
使用温度 Working temperature		-195°C ~ +280°C
导热系数 Thermal conductivity		42W/m · K
热膨胀系数 Coefficient of thermal expansion		11 × 10 ⁻⁶ /K



1. 聚四氟乙烯与铅的混合物
2. 球形青铜粉
3. 钢背
4. 电镀层 (铜或锡)

◎ CHB-1T 齿轮泵专用轴承/Gear Pump Bushing

该产品与CHB-1具有相同结构，是齿轮油泵专用轴承。根据齿轮油泵的高PV值条件而设计的特殊配方产品。它具有摩擦系数小而稳定，耐磨性能好，抗冲击的特点，产品广泛应用于齿轮油泵、柱塞泵、叶片泵等。

CHB-1 Carbon Steel self-lubricating bearing (Gear pump) has the same structure as CHB-1, it is special for gear pump. It is a special formula product devised by high PV value operational mode conditions of gearoil pump. Characterized by low friction factor, stability, well wearing performance and impact resistance, it has been widely applied to gear pumps, radial piston pumps and vane pumps etc.

技术参数: Technical Data

性能指标 Performance index		数据 Data
最大承载 P Max Load Capacity	静载 Static load	250N/mm ²
	动载 Dynamic load	140N/mm ²
最高线速度 V Max Sliding Speed	干摩擦 Dry friction	2.5m/s
	油润滑 Oil lubrication	10m/s
最高PV值 Max PV Value Limit	干摩擦 Dry friction	4.2N/mm ² · m/s
	油润滑 Oil lubrication	60N/mm ² · m/s
摩擦系数 μ Friction coefficient		0.03 ~ 0.18
使用温度 Working temperature		-195°C ~ +280°C
导热系数 Thermal conductivity		42W/m · K



1. 聚四氟乙烯与铅及其他填充混合物
2. 球形青铜粉
3. 钢背
4. 电镀层 (铜或锡)

CHB-1 无油润滑轴承 Oilless Bushing

◎ CHB-1P 往复运动轴承/Reciprocating Motion Bushing

该产品与CHB-1具有相同结构，是根据往复运动的特殊工况条件而设计的特殊配方产品，具有断油条件下润滑能力强，耐磨性能好，保持油膜的特点。产品广泛应用于汽车减震器、摩托车减震器、液压马达、气动元件等，其性能与国外DD2相似。

CHB-1P Carbon Steel Pb-free self-lubricating bearing has the same structure as CHB-1, particularly suitable for intermittent operation, reciprocating or oscillating movements. Characterized by good lubrication and wear performance in the conditions of dry operation of oil. It is applied to shock absorber of automobile, motorcycles and various hydraulic motors and pneumatic elements etc.

技术参数: Technical Data

性能指标 Performance index		数据 Data
最大承载 P Max Load Capacity	静载 Static load	250N/mm ²
	动载 Dynamic load	140N/mm ²
最高线速度 V Max Sliding Speed	干摩擦 Dry friction	2.5m/s
	油润滑 Oil lubrication	5.0m/s
最高PV值 Max PV Value Limit	干摩擦 Dry friction	3.6N/mm ² · m/s
	油润滑 Oil lubrication	50N/mm ² · m/s
摩擦系数 μ Friction coefficient		0.04 ~ 0.20
使用温度 Working temperature		-195°C ~ +280°C
导热系数 Thermal conductivity		42W/m · K

◎ CHB-1B 铜基无给油轴承/Bronze Based Bushing

该产品以特殊配方铜合金为基体，中间烧结球形青铜层，表面轧制聚四氟乙烯和亲油性纤维的混合物。它具有较好的自润滑、耐磨损、摩擦系数低、耐腐蚀等性能，产品广泛应用于冶金机械、连铸轧机、水泥灌浆机械、螺旋式输送机。

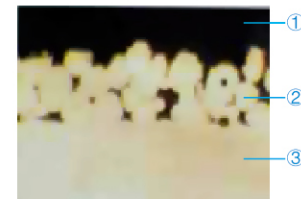
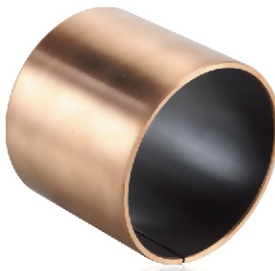
CHB-1B Bronze Pb-free self-lubricating bearing used bronze alloy as base with special formulation, sintered porous bronze as its interlayer and the Compound of PTFE and lipophilicity fiber as its surface. It offers the property of good self-lubricating, low wear, low friction, corrosion resistance. It has been widely applied to metallurgy steel machinery, joined casting machinery, cement grout pump and spiral conveyor machinery etc.

技术参数: Technical Data

性能指标 Performance index		数据 Data
最大承载 P Max Load Capacity	静载 Static load	140N/mm ²
	动载 Dynamic load	140N/mm ²
最高线速度 V Max Sliding Speed	干摩擦 Dry friction	2.5m/s
	油润滑 Oil lubrication	5.0m/s
最高PV值 Max PV Value Limit	干摩擦 Dry friction	3.6N/mm ² · m/s
	油润滑 Oil lubrication	50N/mm ² · m/s
摩擦系数 μ Friction coefficient	干摩擦 Dry friction	0.03 ~ 0.08
	油润滑 Oil lubrication	0.02 ~ 0.07
使用温度 Working temperature		-195°C ~ +300°C
导热系数 Thermal conductivity		70W/m · K
热膨胀系数 Coefficient of thermal expansion		17 × 10 ⁻⁶ /K



1. 聚四氟乙烯与铅的混合物
2. 球形青铜粉
3. 钢背
4. 电镀层 (铜或锡)



1. 聚四氟乙烯与铅及其他填充混合物
2. 球形青铜粉
3. 钢背

CHB-1 无油润滑轴承 Oilless Bushing

◎ CHB-1D 液压专用轴承/Hydraulic Bushing

该产品与CHB-1具有相同结构，是液压专用轴承，是结合油缸及减震器的工作原理而设计的特殊配方产品。它具有CHB-1优点外，特别适用于往复频繁的大侧向力场合，产品适用于汽车减震器、摩托车减震器以及各种液压油缸等。

CHB-1D has the same structure with CHB-1, particularly suitable for hydraulic pump. It is a special formula designed by combining oil cylinder with the working principle of bumpers. Besides the advantages of CHB-1P, it is particularly applicable for the situation of great cross range force of frequent to-and-fro. It is applicable for automobile shock absorbers, motorcycle bumper and various hydraulic pressure cylinders etc.

技术参数: Technical Data

性能指标 Performance index		数据 Data
最大承载 P Max Load Capacity	静载 Static load	250N/mm ²
	动载 Dynamic load	140N/mm ²
最高线速度 V Max Sliding Speed	干摩擦 Dry friction	2.5m/s
	油润滑 Oil lubrication	5.0m/s
最高PV值 Max PV Value Limit	干摩擦 Dry friction	3.8N/mm ² · m/s
	油润滑 Oil lubrication	50N/mm ² · m/s
摩擦系数 μ Friction coefficient		0.04 ~ 0.20
使用温度 Working temperature		-195°C ~ +280°C
导热系数 Thermal conductivity		42W/m · K

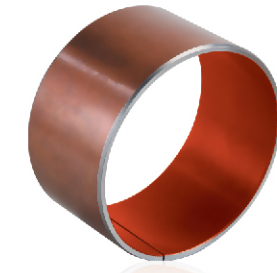
◎ CHB-1S 不锈钢耐腐蚀轴承/Stainless Steel Bushing

该产品以不锈钢为基体，中间烧结球形青铜层，表面轧制聚四氟乙烯和铅的混合物。它具有较好的自润滑、耐磨损、摩擦系数低、耐腐蚀等性能。产品广泛应用于印染机械、化工机械、海洋工业耐腐蚀部位等。

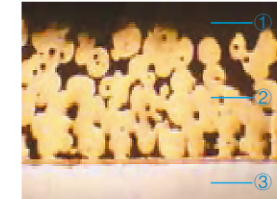
CHB-1S Stainless steel self-lubricating bearing uses stainless steel as base, sintered porous bronze as its interlayer and the Compound of PTFE and Lead as its surface. It offers the property of good self-lubrication, low wear, low friction, corrosion resistance. It has been widely applied to dyeing machinery, chemical engineering machinery and marine industry etc.

技术参数: Technical Data

性能指标 Performance index		数据 Data
最大承载 P Max Load Capacity	静载 Static load	250N/mm ²
	动载 Dynamic load	140N/mm ²
最高线速度 V Max Sliding Speed	干摩擦 Dry friction	2.5m/s
	油润滑 Oil lubrication	5.0m/s
最高PV值 Max PV Value Limit	干摩擦 Dry friction	3.8N/mm ² · m/s
	油润滑 Oil lubrication	50N/mm ² · m/s
摩擦系数 μ Friction coefficient		0.04 ~ 0.20
使用温度 Working temperature		-195°C ~ +280°C
导热系数 Thermal conductivity		50W/m · K

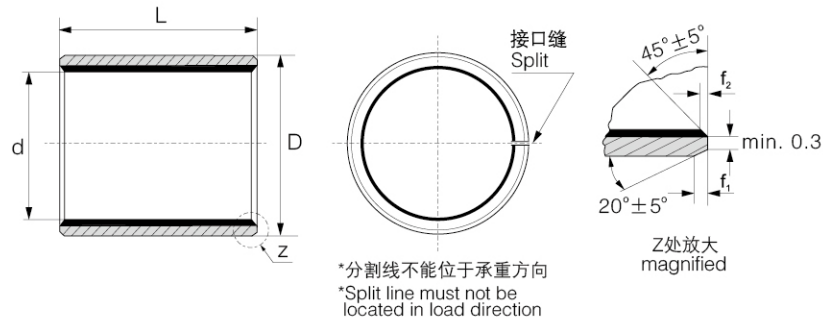


1. 聚四氟乙烯与亲油性纤维混合物
2. 球形青铜粉
3. 钢背
4. 电镀层 (铜或锡)



1. 聚四氟乙烯与亲油性纤维混合物
2. 球形青铜粉
3. 不锈钢背

CHB-1/1B/1S/1T/1P/1D标准公差尺寸表
Standard Metric Size



单位unit:mm

尺寸	公差 f7	尺寸	公差 H7	外径公差 D _o	压装后 内孔公差 D _{i,a}	壁厚 S ₃	f ₁	f ₂	L ⁰ _{-0.40} (d≤Φ28 L-0.30 d>Φ30 L-0.40)											
									6	8	10	12	15	20	25	30	40	50		
2	0 -0.006	3.5	+0.008	3.5	+0.055 +0.025	0.750	0.4	0.3												
4	0 -0.008	5.5	+0.008	5.5	+0.055 +0.025	0.730			0406	0408										
5	-0.010 -0.022	7	+0.015	7	+0.055 +0.025				0506	0508	0510									
6	-0.010 -0.022	8	+0.015	8	+0.055 +0.025				0606	0608	0610									
8	-0.013 -0.028	10	+0.015	10	+0.055 +0.025				0806	0808	0810	0812	0815							
10	-0.013 -0.028	12	+0.018	12	+0.065 +0.030				1006	1008	1010	1012	1015	1020						
12	-0.016 -0.034	14	+0.018	14	+0.065 +0.030				1206	1208	1210	1212	1215	1220	1225					
13	-0.016 -0.034	15	+0.018	15	+0.065 +0.030	1.005 0.980	0.6	0.3			1310			1320						
14	-0.016 -0.034	16	+0.018	16	+0.065 +0.030						1410	1412	1415	1420	1425					
15	-0.016 -0.034	17	+0.018	17	+0.065 +0.030						1510	1512	1515	1520	1525					
16	-0.016 -0.034	18	+0.018	18	+0.065 +0.030						1610	1612	1615	1620	1625					
17	-0.016 -0.034	19	+0.021	19	+0.075 +0.035						1710	1712		1720						
18	-0.016 -0.034	20	+0.021	20	+0.075 +0.035						1810	1812	1815	1820	1825					
20	-0.020 -0.041	23	+0.021	23	+0.075 +0.035						2010	2012	2015	2020	2025	2030				
22	-0.020 -0.041	25	+0.021	25	+0.075 +0.035	1.505 1.475	0.6	0.4			2210	2212	2215	2220	2225	2230				
24	-0.020 -0.041	27	+0.021	27	+0.075 +0.035								2415	2420	2425	2430				
25	-0.020 -0.041	28	+0.021	28	+0.075 +0.035						2510	2512	2515	2520	2525	2530	2540	2550		
28	-0.020 -0.041	32	+0.025	32	+0.085 +0.045								2815	2820	2825	2830	2840			
30	-0.020 -0.041	34	+0.025	34	+0.085 +0.045						3012	3015	3020	3025	3030	3040				
32	-0.025 -0.050	36	+0.025	36	+0.085 +0.045	2.005 1.970	1.2	0.4					3220		3230	3240				
35	-0.025 -0.050	39	+0.025	39	+0.085 +0.045						3512	3515	3520	3525	3530	3540	3550			
38	-0.025 -0.050	42	+0.025	42	+0.085 +0.045						3815			3830	3840					
40	-0.025 -0.050	44	+0.025	44	+0.085 +0.045						4012		4020	4025	4030	4040	4050			

Catalog No. — d — L
CHB-1 — 15 — 10

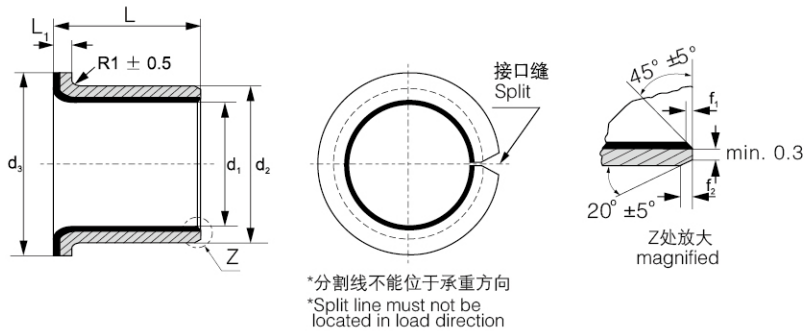
CHB-1/1B/1S/1T/1P/1D标准公差尺寸表
Standard Metric Size

单位unit:mm

注: 轴径75以上公差为h8

尺寸	公差 f7	尺寸	公差 H7	外径公差 D _o	压装后 内孔公差 D _{i,a}	壁厚 S ₃	f ₁	f ₂	L ⁰ _{-0.40} (d≤Φ28 L-0.30 d>Φ30 L-0.40)													
									20	25	30	40	50	60	70	80	100	115				
45	-0.025 -0.050	50	+0.025	50	+0.085 +0.045				4520	4525	4530	4540	4550									
50	-0.025 -0.050	55	+0.030	55	+0.100 +0.055				5020		5030	5040	5050	5060								
55	-0.030 -0.060	60	+0.030	60	+0.100 +0.055						5530	5540	5550	5560								
60	-0.030 -0.060	65	+0.030	65	+0.100 +0.055	2.505 2.460	1.8	0.6			6030	6040	6050	6060	6070							
65	-0.030 -0.060	70	+0.030	70	+0.100 +0.055						6530	6540	6550	6560	6570							
70	-0.030 -0.060	75	+0.030	75	+0.100 +0.055							7040	7050	7060	7070	7080						
75	-0.030 -0.060	80	+0.030	80	+0.100 +0.055						7530	7540	7550	7560	7570	7580						
80	-0.045	85	+0.035	85	+0.120 +0.070							8040	8050	8060	8070	8080	80100					
85	-0.054	90	+0.035	90	+0.120 +0.070							8540		8560		8580	85100					
90	-0.054	95	+0.035	95	+0.120 +0.070							9040	9050	9060	9080	90100						
95	-0.054	100	+0.035	100	+0.120 +0.070	2.490 2.440	1.8	0.6					9550	9560	9580	95100						
100	-0.054	105	+0.035	105	+0.120 +0.070								10050	10060	10080	100115						
105	-0.054	110	+0.035	110	+0.120 +0.070								10560		10580	105115						
110	-0.054	115	+0.035	115	+0.120 +0.070									11060	11080	110115						
120	-0.054	125	+0.040	125	+0.170 +0.100									12060	12080	120100						
125	-0.063	130	+0.040	130	+0.170 +0.100									12560		125100	125115					
130	-0.063	135	+0.040	135	+0.170 +0.100	2.465	1.8	0.6						13060	13080	130100						
140	-0.063	145	+0.040	145	+0.170 +0.100	2.415	1.8	0.6						14060	14080	140100						
150	-0.063	155	+0.040	155	+0.170 +0.100									15060	15080	150100						
160	-0.063	165	+0.040	165	+0.170 +0.100									16060	16080	160100	160115					
180	-0.063	185	+0.046	185	+0.210 +0.130										18080	180100						
190	-0.072	195	+0.046	195	+0.210 +0.130	2.465	1.8	0.6							19080	190100						
200	-0.072	205	+0.046	205	+0.210 +0.130	2.415	1.8	0.6							20080	200100						
220	-0.072	225	+0.046	225	+0.210 +0.130									20060	22080	220100						
250	-0.072	255	+0.052	255	+0.260 +0.170										25080	250100						
260	-0.081	265	+0.052	265	+0.260 +0.170	2.465	1.8	0.6							26080	260100						
280	-0.081	285	+0.052	285	+0.260 +0.170	2.415	1.8	0.6							28080	280100						
300	-0.081	305	+0.052	305	+0.260 +0.170																	

CHB-1F 无油翻边轴套标准尺寸表
Oil-Flanged Bushes Standard Metric Size

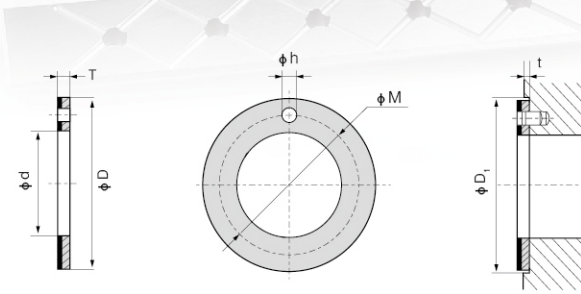


单位unit:mm

轴径		座孔		规格标志 Desc.	尺寸					f ₁	f ₂
尺寸	公差 f7	尺寸	公差 H7		d ₁	d ₂	d ₃ ± 0.5	L ± 0.25	L ₁ ± 0.2		
6	-0.013 -0.028	8	+0.015	CHB-1F 06040	6	8	12	4			
				CHB-1F 06070			7				
8	-0.013 -0.028	10	+0.015	CHB-1F 08055	8	10	15	5.5			
				CHB-1F 08075			7.5				
10	-0.016 -0.034	12	+0.018	CHB-1F 10070	10	12	18	7			
				CHB-1F 10090			9				
				CHB-1F 10120			12				
12	-0.016 -0.034	14	+0.018	CHB-1F 12070	12	14	20	7			
				CHB-1F12090			9				
				CHB-1F12120			12	1	0.5	0.4	
14	-0.016 -0.034	16	+0.018	CHB-1F14120	14	16	22	12			
				CHB-1F14170			17				
				CHB-1F15090			9				
15	-0.016 -0.034	17	+0.018	CHB-1F15120	15	17	23	12			
				CHB-1F15170			17				
16	-0.016 -0.034	18	+0.018	CHB-1F16120	16	18	24	12			
				CHB-1F16170			17				
				CHB-1F18120			12				
18	-0.016 -0.034	20	+0.021	CHB-1F18170	18	20	26	17			
				CHB-1F18200			20				
20	-0.020 -0.041	23	+0.021	CHB-1F20115	20	23	30	11.5			
				CHB-1F20165			16.5				
				CHB-1F20215			21.5				
22	-0.020 -0.041	25	+0.021	CHB-1F22150	22	25	32	15	1.5	0.8	0.4
				CHB-1F22200			20				
25	-0.020 -0.041	28	+0.021	CHB-1F25115	25	28	35	11.5			
				CHB-1F25165			16.5				
				CHB-1F25215			21.5				
30	-0.025 -0.050	34	+0.021	CHB-1F30160	30	34	42	16			
				CHB-1F30260			26				
35	-0.025 -0.050	39	+0.025	CHB-1F35160	35	39	47	16	2	1.0	0.5
				CHB-1F35260			26				
40	-0.025 -0.050	44	+0.025	CHB-1F40260	40	44	53	26			
				CHB-1F40400			40				

Catalog No. — d — L
CHB-1F — 15 — 12

CHB-1WC 复合止推垫片
标准公差尺寸表 Standard Metric Size

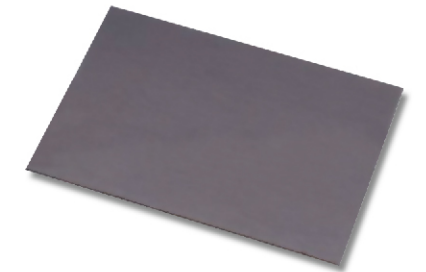
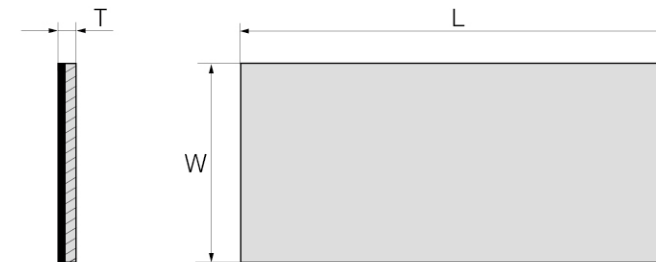


单位unit:mm

相配轴径 Axle	型号规格 Designation	垫片尺寸 Washer Dimension				安装尺寸 Installation Size		
		φD ₀ ⁰ _{-0.25}	φd ₀ ^{+0.25} ₀	T _{-0.050} ⁰	φM ± 0.125	φh ^{+0.40} _{+0.10}	t ± 0.20	φD ₁₀ ^{+0.12}
8	CHB-1WC 10	20	10		15			20
10	CHB-1WC 12	24	12		18	1.5		24
12	CHB-1WC 14	26	14		20			26
14	CHB-1WC 16	30	16		23	2.0		30
16	CHB-1WC 18	32	18		25			32
18	CHB-1WC 20	36	20		28			36
20	CHB-1WC 22	38	22	1.5	30		1.0	38
22	CHB-1WC 24	42	24		33	3.0		42
24	CHB-1WC 26	44	26		35			44
26	CHB-1WC 28	48	28		38			48
30	CHB-1WC 32	54	32		43			54
36	CHB-1WC 38	62	38		50			62
40	CHB-1WC 42	66	42		54	4.0		66
46	CHB-1WC 48	74	48		61			74
50	CHB-1WC 52	78	52	2.0	65		1.5	78
60	CHB-1WC 62	90	62		76			90

Catalog No. — d
CHB-1WC — 10

CHB-1/1B/1S/1T/1P/1D 滑板
标准公差尺寸表 Standard Metric Size



单位unit:mm

型号规格 Designation	长度 Length L ₀ ^{+5.0}	宽度 Width W ₀ ^{+2.0}	厚度 Thickness T _{-0.050} ⁰
CHB-1SP 010130	500	130	1.0
CHB-1SP 015130	500	130	1.5
CHB-1SP 020130	500	130	2.0
CHB-1SP 025130	500	130	2.5

CHB-2 边界润滑轴承
Boundary Lubricating Bushing

◎ **CHB-2 边界润滑轴承/Marginal Lubrication Bushing** (标准公差尺寸见第22页)

该产品以优质低碳钢为基体，中间烧结球形青铜层，表面轧制改性聚甲醛(POM)。在边界润滑条件下可长期使用而不加油，耐磨层表面有储油坑。产品广泛应用于冶金机械、矿山机械、水利机械、汽车、建筑机械、农用机械、轧钢行业等。

CHB-2 Marginal Pb-free self-lubricating bearing is used steel-backing as its structure, sintered porous bronze as its interlayer, surface inlaid the modified POM. Suitable for marginally lubricated and dryoperation on the conditions of lubrication indents grease. It has been widely applied to metallurgical machinery, Mine machinery, water conservancy machinery, vapor locomotive, building machinery, agriculture machinery, steel rolling industry etc.

性能指标 Performance index		数据 Data
最大承载 P Max Load Capacity	静载 Static load	250N/mm ²
	动载 Dynamic load	150N/mm ²
最高线速度 V Max Sliding Speed	脂润滑 Grease lubrication	2.5m/s
最高PV值 Max PV Value Limit	脂润滑 Grease lubrication	2.8N/mm ² · m/s
摩擦系数 μ Friction coefficient	脂润滑 Grease lubrication	0.05 ~ 0.25
使用温度 Working temperature		-40°C ~ +130°C
导热系数 Thermal conductivity		4W/m · K
热膨胀系数 Coefficient of thermal expansion		12 × 10 ⁻⁶ /K

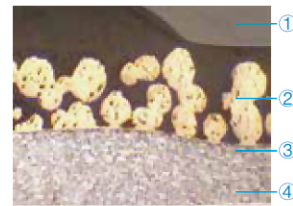
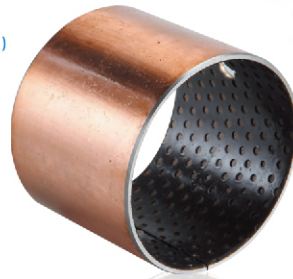
◎ **CHB-2Y 边界润滑无铅轴承/Marginal Lubricating Lead-Free Bushing**

该产品与CHB-2具有相同结构和使用性能，同时具有环保功能，在边界润滑条件下可长期使用而不加油，耐磨层表面有储油坑。产品广泛应用于冶金机械、矿山机械、水利机械、汽机车、建筑机械、农用机械、轧钢行业、食用机械、制药机械、烟草机械等。

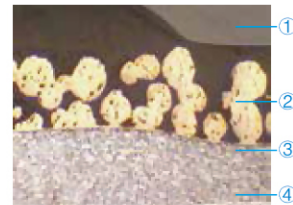
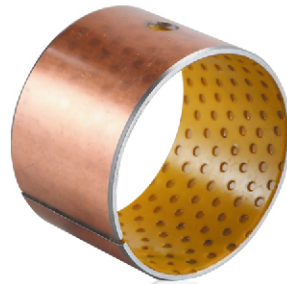
CHB-2Y has the same structure and functional performance with CHB-2. It can work long time without oil in the condition of prelubricated with lubrication indents. Widely applied to metallurgy machinery, Mining machinery, water conservancy machinery, automobile, building machinery, agriculture machinery, rolling steel industry etc.

技术参数: Technical Data

性能指标 Performance index		数据 Data
最大承载 P Max Load Capacity	静载 Static load	250N/mm ²
	动载 Dynamic load	150N/mm ²
最高线速度 V Max Sliding Speed	脂润滑 Grease lubrication	2.5m/s
最高PV值 Max PV Value Limit	脂润滑 Grease lubrication	3.6N/mm ² · m/s
摩擦系数 μ Friction coefficient	脂润滑 Grease lubrication	0.05 ~ 0.25
使用温度 Working temperature		-40°C ~ +130°C
导热系数 Thermal conductivity		4W/m · K
热膨胀系数 Coefficient of thermal expansion		12 × 10 ⁻⁶ /K

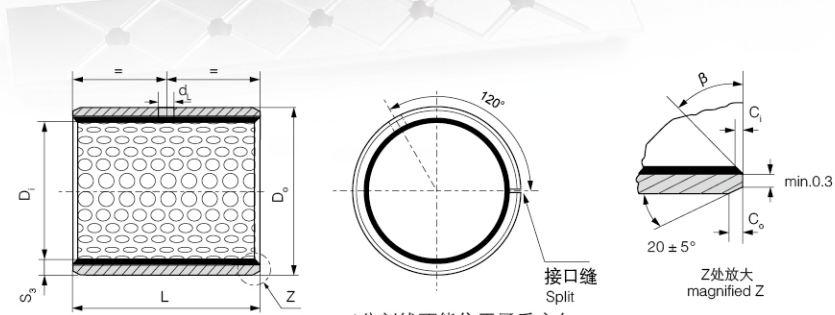


1. 聚甲醛与纤维混合物
2. 球形青铜粉
3. 钢背
4. 电镀层 (铜或锡)



1. 聚甲醛与纤维混合物
2. 球形青铜粉
3. 钢背
4. 电镀层 (铜或锡)

CHB-2 边界润滑轴承标准公制尺寸
Marginal-lubricating Bearing Standard Metric Size



*分割线不能位于承重方向
*Split line must not be located in load direction

单位unit:mm

轴径 尺寸	公差 h8	座孔		外径公差 D ₀	压装后 内孔公差 D _{1a}	配合 间隙 C _D	壁厚 S ₃	油孔 d _L	L _{0.40}												
		尺寸	公差 H7						10	15	20	25	30	35	40	45	50	60			
10	-0.022	12	+0.018	12	+0.065 +0.030	10.108 10.040	0.130 0.040		1010	1015	1020										
12	-0.027	14	+0.018	14	+0.065 +0.030	12.108 12.040			1210	1215	1220										
14	-0.027	16	+0.018	16	+0.065 +0.030	14.108 14.040	0.135 0.040			1415	1420										
15	-0.027	17	+0.018	17	+0.065 +0.030	15.108 15.040	0.040	0.955		1515	1520	1525									
16	-0.027	18	+0.018	18	+0.065 +0.030	16.108 16.040		4		1615	1620	1625									
18	-0.027	20	+0.021	20	+0.075 +0.035	18.111 18.040	0.138 0.040			1815	1820	1825									
20	-0.033	23	+0.021	23	+0.075 +0.035	20.131 20.050				2015	2020	2025	2030								
22	-0.033	25	+0.021	25	+0.075 +0.035	22.131 22.050	0.164 0.050	1.475 1.445		2215		2225									
25	-0.033	28	+0.021	28	+0.075 +0.035	25.131 25.050				2515	2520	2525	2530								
28	-0.033	32	+0.025	32	+0.085 +0.045	28.155 28.060	0.188		6			2820	2830								
30	-0.033	34	+0.025	34	+0.085 +0.045	30.155 30.060	0.060	1.970 1.935				3020	3025	3030		3040					
35	-0.039	39	+0.025	39	+0.085 +0.045	35.155 35.060	0.194					3520	3530	3535	3540						
40	-0.039	44	+0.025	44	+0.085 +0.045	40.155 40.060	0.060					4020	4030	4040	4050						
45	-0.039	50	+0.025	50	+0.085 +0.045	45.195 45.080	0.234 0.080					4520	4530	4540	4545	4550					
50	-0.039	55	+0.030	55	+0.100 +0.055	50.200 50.080	0.239 0.080	2.460 2.415	8				5030	5040	5050	5060					
55	-0.046	60	+0.030	60	+0.100 +0.055	55.200 55.080	0.246						5530	5540	5550	5560					
60	-0.046	65	+0.030	65	+0.100 +0.055	60.200 60.080							6030	6040	6050	6060					

Catalog No. — d — L
CHB-2 — 15 — 15