

**CHB-2 边界润滑轴承标准公制尺寸**  
Marginal-lubricating Bearing Standard Metric Size

单位unit:mm

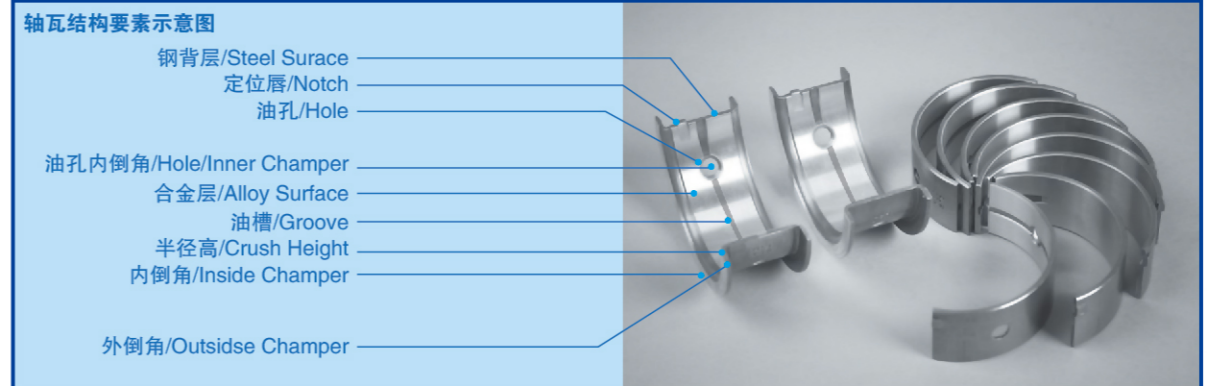
轴径 尺寸	公差 h8	座孔		外径公差		压装后 内孔公差	配合 间隙	壁厚	油孔	L <sub>0.40</sub>									
		尺寸	公差 H7	D <sub>o</sub>	D <sub>ia</sub>					C <sub>D</sub>	S <sub>3</sub>	d <sub>L</sub>	40	50	60	80	90	95	100
65	-0.046	70	+0.030	70	+0.100 +0.055	65.200 65.080				6540		6560							
70	-0.046	75	+0.030	75	+0.100 +0.055	70.200 70.080	0.246 0.080	2.460 2.415	8	7040	7050		7080						
75	-0.046	80	+0.030	80	+0.100 +0.055	75.200 75.080				7540		7560	7580						
80	-0.046	85	+0.035	85	+0.120 +0.070	80.265 80.100	0.313 0.100			8040		8060	8080						
85	-0.054	90	+0.035	90	+0.120 +0.070	85.265 85.100				8540		8560	8580						
90	-0.054	95	+0.035	95	+0.120 +0.070	90.265 90.100				9040		9060	9080	9090					
100	-0.054	105	+0.035	105	+0.120 +0.070	100.265 100.100	0.321 0.100				10050		10080	10095					
105	-0.054	110	+0.035	110	+0.120 +0.070	105.265 105.100						10560	10580	10595		105110			
110	-0.054	115	+0.035	115	+0.120 +0.070	110.265 110.110			9.5			11060	11080	11095		110110			
120	-0.054	125	+0.040	125	+0.170 +0.100	120.270 120.110						12060	12080			120110			
125	-0.063	130	+0.040	130	+0.170 +0.100	125.270 125.110						12560				125110			
130	-0.063	135	+0.040	135	+0.170 +0.100	130.270 130.110						13050	13060	13080		130100			
140	-0.063	145	+0.040	145	+0.170 +0.100	140.270 140.110	0.324 0.100					14050	14060	14080		140100			
150	-0.063	155	+0.040	155	+0.170 +0.100	150.270 150.110		2.450 2.385				15050	15060	15080		150100			
160	-0.063	165	+0.040	165	+0.170 +0.100	160.270 160.110						16050	16060	16080		160100			
170	-0.063	175	+0.040	175	+0.170 +0.100	170.270 170.110						17050		17080		170100			
180	-0.063	185	+0.046	185	+0.210 +0.130	180.270 180.110			9.5			18050	18060	18080		180100			
190	-0.072	195	+0.046	195	+0.210 +0.130	190.276 190.110						19050	19060	19080		190100		190120	
200	-0.072	205	+0.046	205	+0.210 +0.130	200.276 200.110	0.339 0.110					20050	20060	20080		200100		200120	
220	-0.072	225	+0.046	225	+0.210 +0.130	220.276 220.110						22050	22060	22080		220100		220120	
240	-0.072	245	+0.046	245	+0.210 +0.130	240.276 240.110						24050	24060	24080		240100		240120	
250	-0.072	255	+0.052	255	+0.260 +0.170	250.282 250.110						25050	25060	25080		250100		250120	
260	-0.081	265	+0.052	265	+0.260 +0.170	260.282 260.110			9.5			26050	26060	26080		260100		260120	
280	-0.081	285	+0.052	285	+0.260 +0.170	280.282 280.110	0.354 0.110					28050	28060	28080		280100		280120	
300	-0.081	305	+0.052	305	+0.260 +0.170	300.282 300.110						30050	30060	30080		300100		300120	

**CHB-800双金属轴承**  
Bimetallic Self-Lubricating Bearing

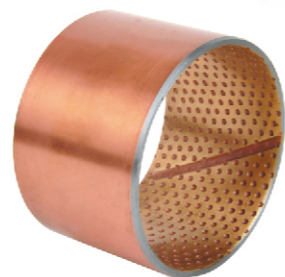
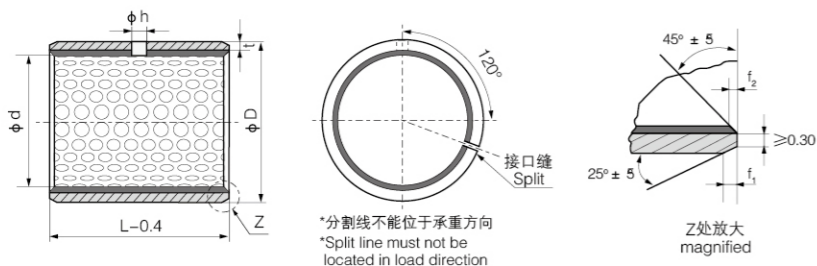


CHB-800双金属轴承，是以低碳钢板为基体材料，表面烧结CuSn6Zn6Pb3或CuPb10Sn10材料的钢铜合金产品。该产品是双合金轴承中承载能力最强的一种，重型车的平衡桥衬套，均使用该产品。它是一种用途很广的高载荷低速运动轴承。  
CHB-800 bimetal bearing, is a low-carbon steel as the basematerial, the surface of the material sintered CuSn6Zn6Pb3 or CuPb10Sn10 steel and copper alloy products. The product isa two-alloy bearings in the bearing capacity of the strongestone, the balance of the bridge sleeve heavy vehicles are using the product. It is a very versatile and any low speed high load bearings.

**轴瓦结构要素的作用与要求:**



CHB-800 标准公制轴承  
Metric Standard Bushing



单位unit:mm

型号 Type	外径 φD	内径 φd	相配轴径		相配座孔		Hole φh	f <sub>1</sub>	f <sub>2</sub>	L-0.4					
			尺寸	公差 f7	尺寸	公差 H7				15	20	25	30	40	50
CHB-800	12	10	10	-0.013 -0.028	12	+0.018 0				1015	1020				
CHB-800	14	12	12	-0.016 -0.034	14	+0.018 0				1215	1220				
CHB-800	16	14	14	-0.016 -0.034	16	+0.018 0				1415	1420				
CHB-800	17	15	15	-0.016 -0.034	17	+0.018 0	φ4	0.6	0.3	1515	1520	1525			
CHB-800	18	16	16	-0.016 -0.034	18	+0.018 0				1615	1620	1625			
CHB-800	19	17	17	-0.016 -0.034	19	+0.021 0				1715	1720	1725			
CHB-800	20	18	18	-0.016 -0.034	20	+0.021 0				1815	1820	1825			
CHB-800	23	20	20	-0.020 -0.041	23	+0.021 0				2015	2020	2025			
CHB-800	25	22	22	-0.020 -0.041	25	+0.021 0					2220	2225	2230		
CHB-800	27	24	24	-0.020 -0.041	27	+0.021 0		0.8	0.4		2420	2425	2430		
CHB-800	28	25	25	-0.020 -0.041	28	+0.021 0					2520	2525	2530		
CHB-800	30	26	26	-0.020 -0.041	30	+0.021 0	φ6				2620	2625	2630		
CHB-800	32	28	28	-0.020 -0.041	32	+0.025 0					2820	2825	2830		
CHB-800	34	30	30	-0.020 -0.041	34	+0.025 0					3020	3025	3030		
CHB-800	36	32	32	-0.025 -0.050	36	+0.025 0		1.2	0.6		3220	3225	3230	3240	
CHB-800	39	35	35	-0.025 -0.050	39	+0.025 0					3520	3525	3530	3540	
CHB-800	42	38	38	-0.025 -0.050	42	+0.025 0					3820	3825	3830	3840	
CHB-800	44	40	40	-0.025 -0.050	44	+0.025 0						4025	4030	4040	
CHB-800	50	45	45	-0.025 -0.050	50	+0.025 0	φ8					4525	4530	4540	
CHB-800	55	50	50	-0.025 -0.050	55	+0.025 0		1.6	0.8				5030	5040	5050
CHB-800	60	55	55	-0.030 -0.060	60	+0.030 0							5530	5540	5550

Catalog No. — d — L  
CHB-800 — 15 — 15

CHB-800 标准公制轴承  
Metric Standard Bushing

单位unit:mm

型号 Type	外径 φD	内径 φd	相配轴径		相配座孔		Hole φh <sub>1</sub>	f <sub>1</sub>	f <sub>2</sub>	L-0.4					
			尺寸	公差 f7	尺寸	公差 H7				40	50	60	70	80	100
CHB-800	65	60	60	-0.030 -0.060	65	+0.030 0	φ8			6040	6050	6060			
CHB-800	70	65	65	-0.030 -0.060	70	+0.030 0				6540	6550	6560			
CHB-800	80	75	75	-0.030 -0.060	80	+0.030 0				7540	7550	7560			
CHB-800	85	80	80	-0.030 -0.060	85	+0.035 0				8040	8050	8060			
CHB-800	90	85	85	-0.036 -0.071	90	+0.035 0					8550	8560	8570		
CHB-800	95	90	90	-0.036 -0.071	95	+0.035 0					9050	9060	9070		
CHB-800	100	95	95	-0.036 -0.071	100	+0.035 0					9550	9560	9570		
CHB-800	105	100	100	-0.036 -0.071	105	+0.035 0					10050	10060	10070		
CHB-800	110	105	105	-0.036 -0.071	110	+0.035 0		1.6	0.8		10550	10560	10570		
CHB-800	115	110	110	-0.036 -0.071	115	+0.035 0	φ9.5				11050	11060	11070		
CHB-800	120	115	115	-0.036 -0.071	120	+0.035 0						11560	11570	11580	
CHB-800	125	120	120	-0.036 -0.071	125	+0.040 0						12060	12070	12080	
CHB-800	130	125	125	-0.043 -0.083	130	+0.040 0						12560	12570	12580	
CHB-800	135	130	130	-0.043 -0.083	135	+0.040 0						13060	13070	13080	
CHB-800	140	135	135	-0.043 -0.083	140	+0.040 0								13580	135100
CHB-800	150	145	145	-0.043 -0.083	150	+0.040 0								14580	145100
CHB-800	155	150	150	-0.043 -0.083	155	+0.040 0								15080	150100